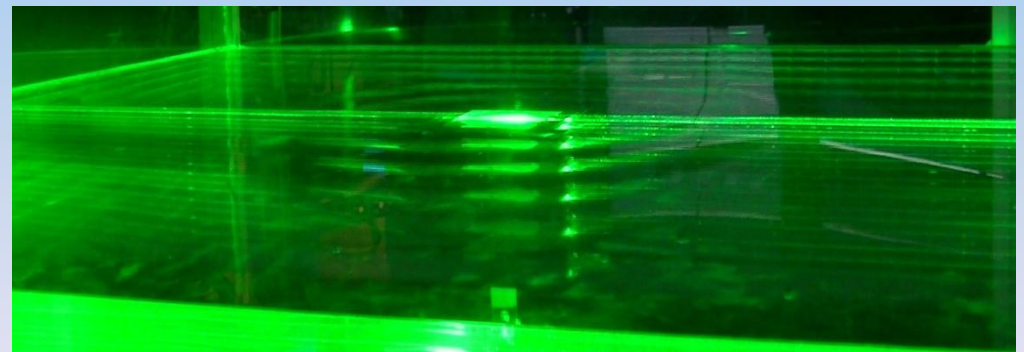
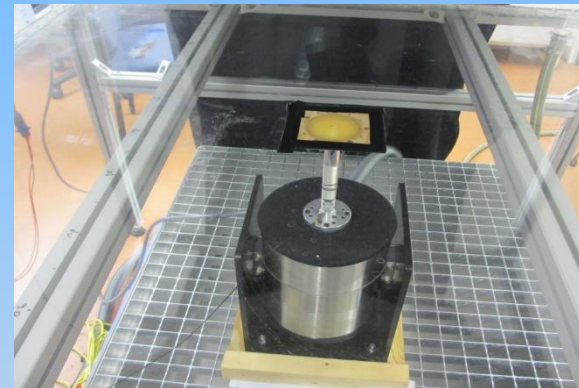
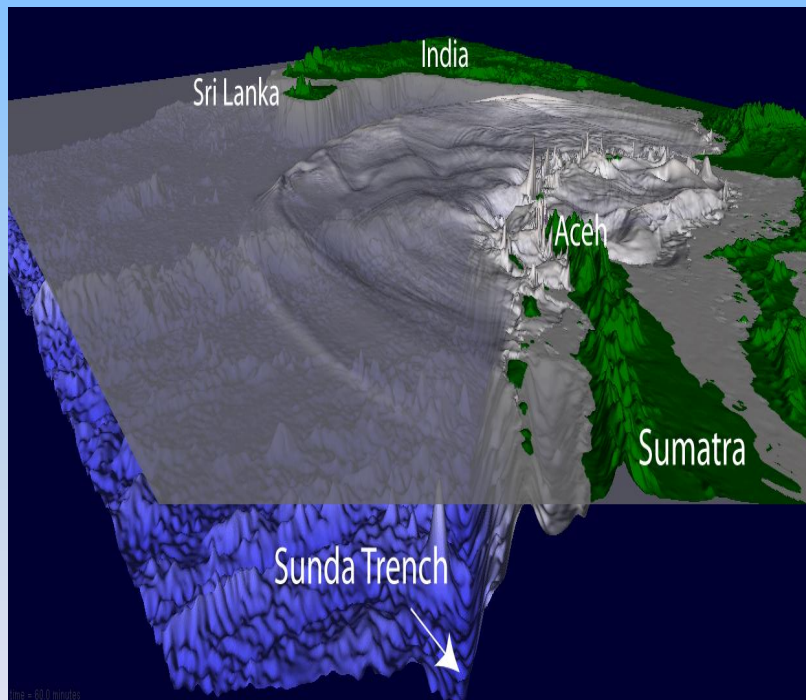


Naissance d'un tsunami

G. Ruiz Chavarria, M. Berhanu et E. Falcon
Laboratoire MSC, Université Paris Diderot
Facultad de Ciencias,, UNAM
gruiz@unam.mx

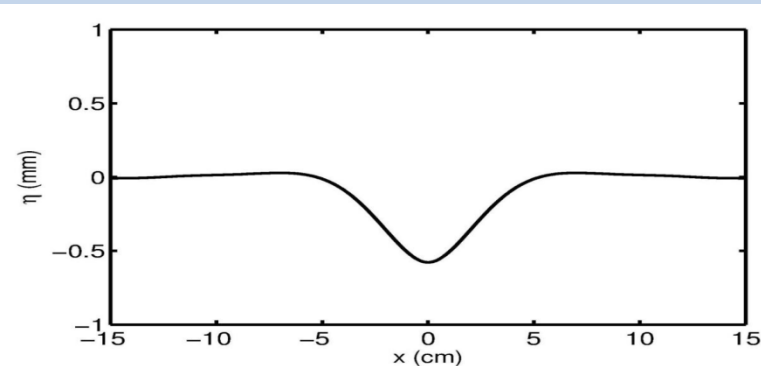
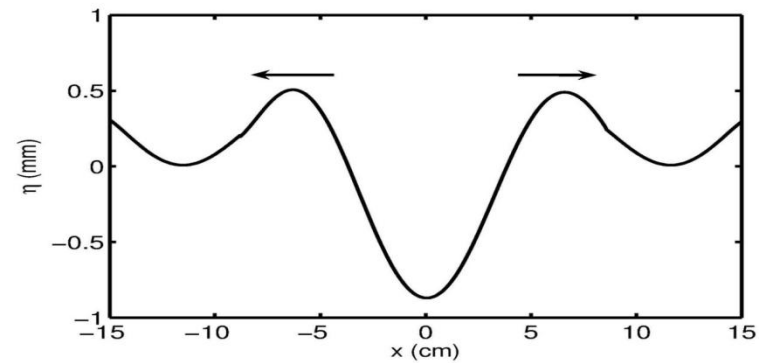
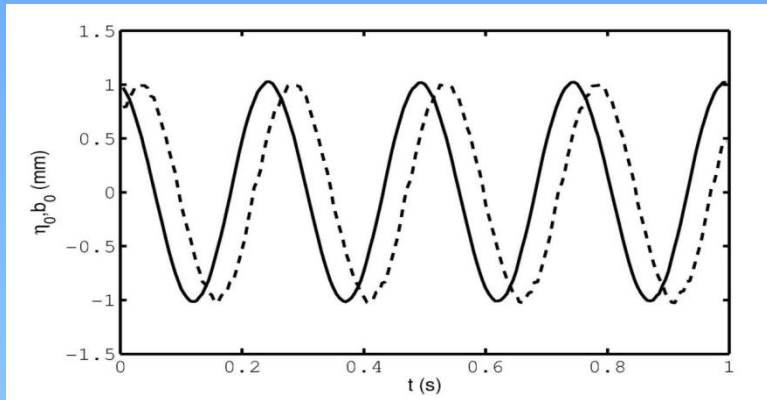


Etude expérimentale de la génération d'ondes par la déformation du fond d'une cuve



Forçage Periodique

$$b = A \sin(\omega t)$$



Forçage Impulsionnel

$$b(t) = A \left[1 - \exp\left(-\frac{t}{\tau}\right) \right]$$

