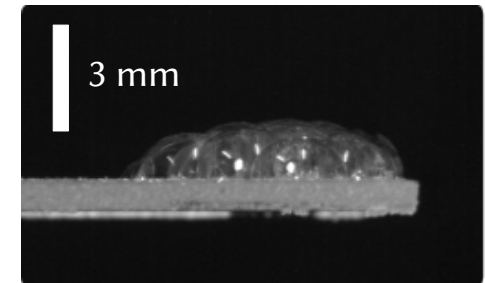

LIQUID FOAM FLOWING NEAR A ROUGH SURFACE

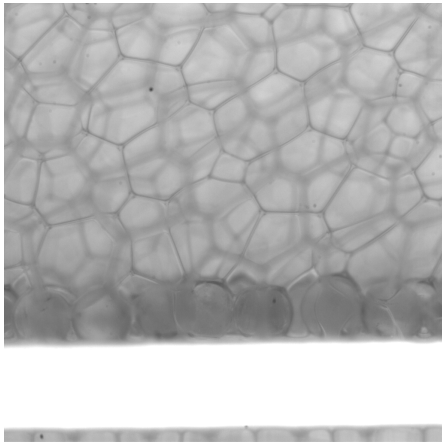
Manon Marchand



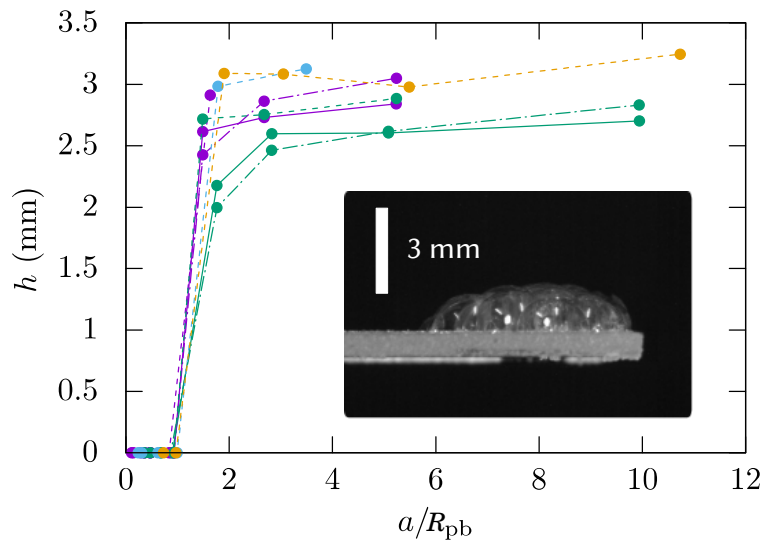
Under supervision of
Emanuelle Rio
Frédéric Restagno
François Boulogne



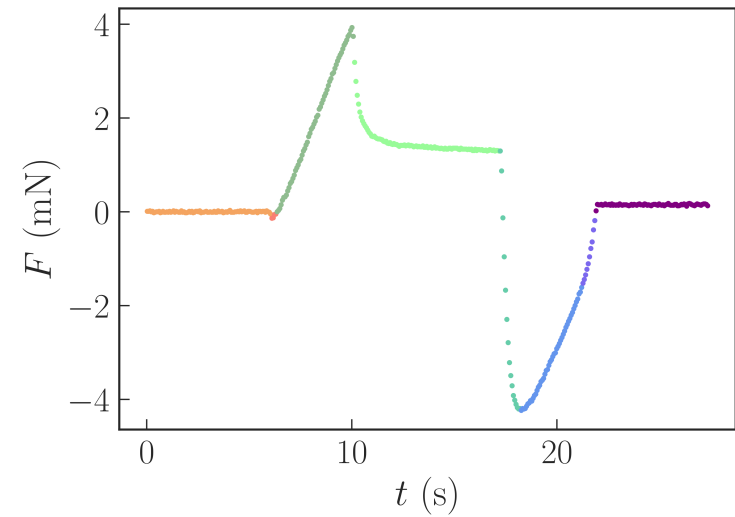
DIRECT IMAGING AT THE SCALE OF A BUBBLE



CHARACTERISATION OF THE FOAM DEPOSIT



FORCE MEASUREMENTS



CHARACTERISATION OF THE STRESS PROPAGATION

