

Steady states in visco-resistive MHD in tokamaks

H. Oueslati^{1,2}, M.-C. Firpo¹, & A. Salhi²

¹Laboratoire de Physique des Plasmas (LPP), Ecole polytechnique, Palaiseau, France

²Laboratoire Matériaux Organisations et Propriétés (LMOP), Université de Tunis el Manar, Tunisie



Study of steady states in JET and ITER configurations

$$(\mathbf{v} \cdot \nabla) \mathbf{v} = \mathbf{J} \times \mathbf{B} - \nabla p + \nu \nabla^2 \mathbf{v} \quad \text{Force Balance} \quad (1)$$

$$\mathbf{E} + \mathbf{v} \times \mathbf{B} = \eta \mathbf{J} \quad \text{Ohm's law} \quad (2)$$

$$\nabla \times \mathbf{B} = \mu_0 \mathbf{J} \quad (3)$$

$$\nabla \times \mathbf{E} = 0 \quad \text{Faraday's law} \quad (4)$$

$$\nabla \cdot \mathbf{v} = 0 \quad \text{incompressibility condition} \quad (5)$$

$$\nabla \cdot \mathbf{B} = 0 \quad (6)$$

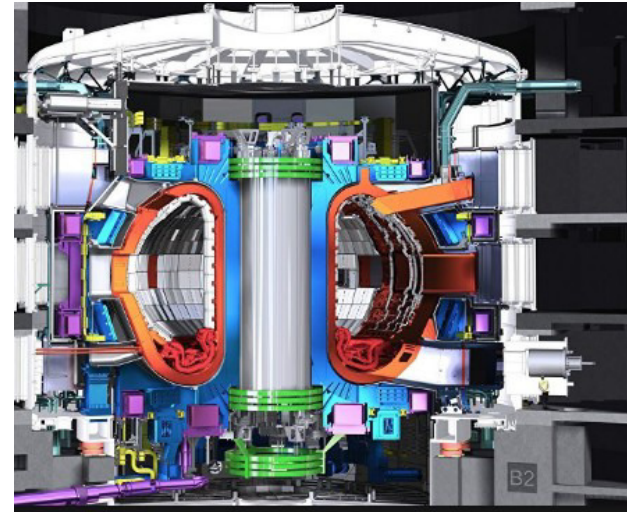
This system of equations is solved with the Finite Element Method (FEM) using FreeFem++ open source in toroidal geometry with axisymmetry.

We fix the resistivity η and we vary the viscosity through the Hartmann number $\mathbf{H} = (\eta \nu)^{-1/2}$

The system of **non linear** coupled equations was solved for **no slip boundary** conditions : we impose that the velocities at the walls are zero. We impose the external electric and magnetic fields.

$$\mathbf{B}_{\text{ext}}(\mathbf{r}, z) = B_0 \frac{r_0}{r} \mathbf{i}_\varphi$$

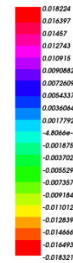
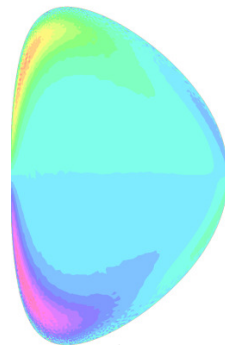
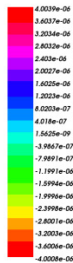
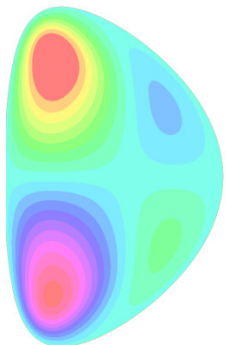
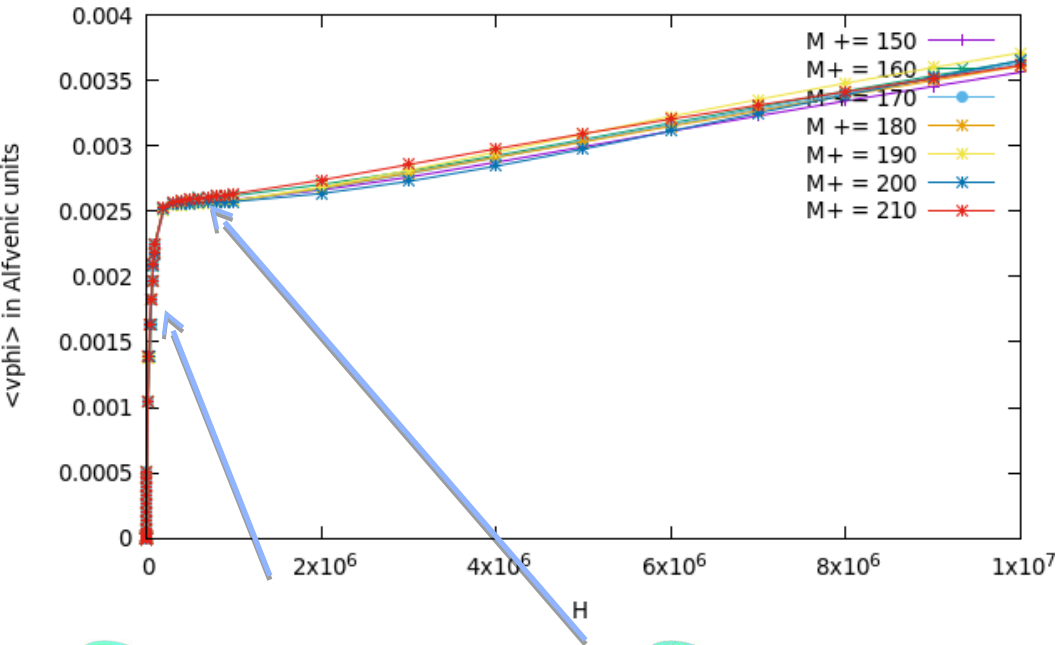
$$\mathbf{E}_{\text{ext}}(\mathbf{r}, z) = E_0 \frac{r_0}{r} \mathbf{i}_\varphi$$



Numerical Results in ITER and JET configurations using FreeFem++



**JET parameters: R=3m, r=1.25m, $\eta=6.7e-7\text{cm}^2/\text{s}$,
Toroidal B = 0.87T**



Device	V (km/s)
C-Mod	0-130
DIII-D	0-30
JET	0-60
JT-60U	0-120
TCV	35
Tore-Supra	0-80
ITER	?

Some **experimental** results for spontaneous rotation

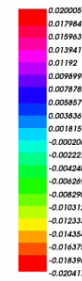
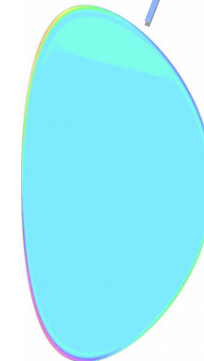
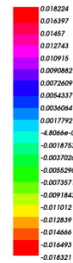
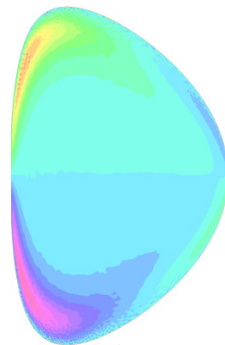
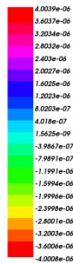
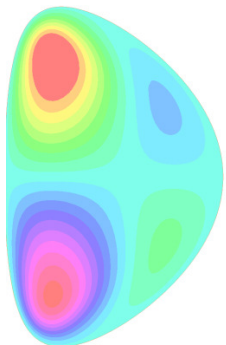
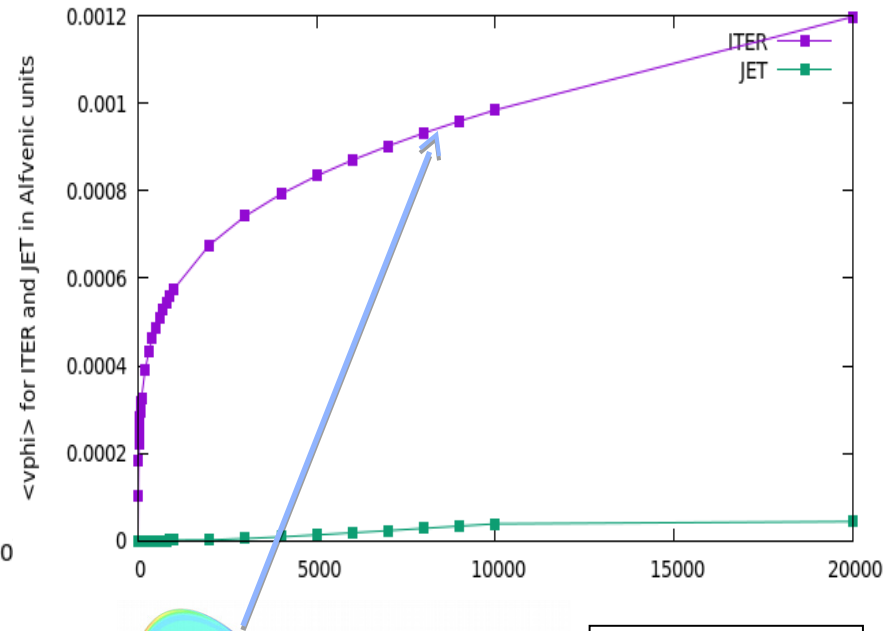
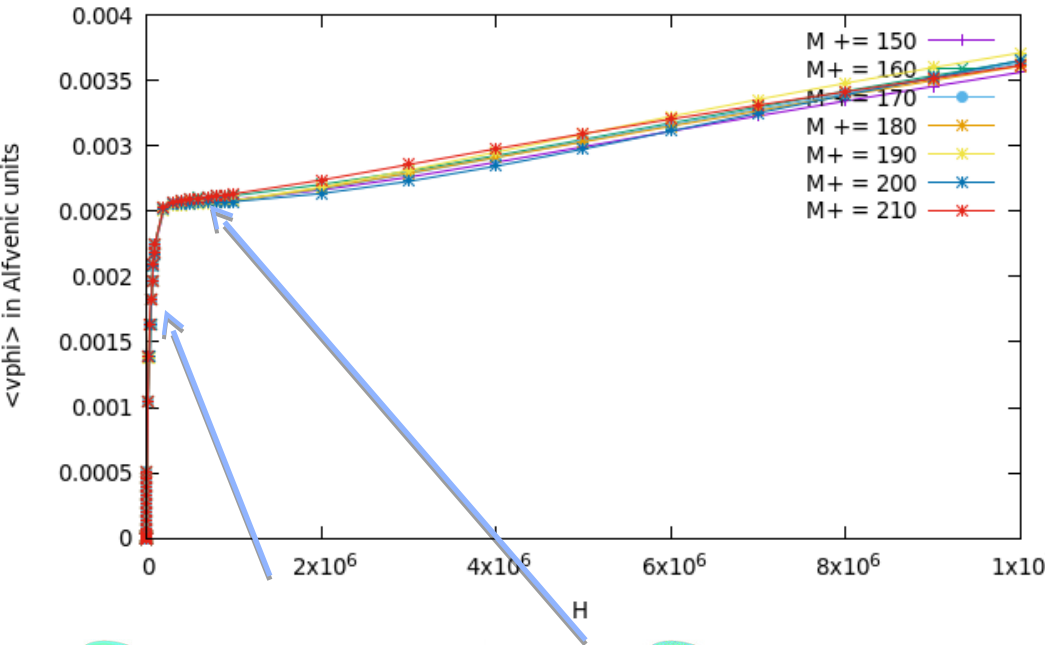
Vphi (Km/s)	Experimental values	Numerical values
JET	0-60	25

Numerical Results in ITER and JET configurations using FreeFem++



**JET parameters: $R=3m, r=1.25m, \eta=6.7e-7cm^2/s$,
Toroidal B = 0.87T**

**ITER parameters: $R=6.2m, r=2m, \eta=6.7e-9cm^2/s$,
Toroidal B = 5T**



Toroidal mean square velocities are larger in ITER than in JET