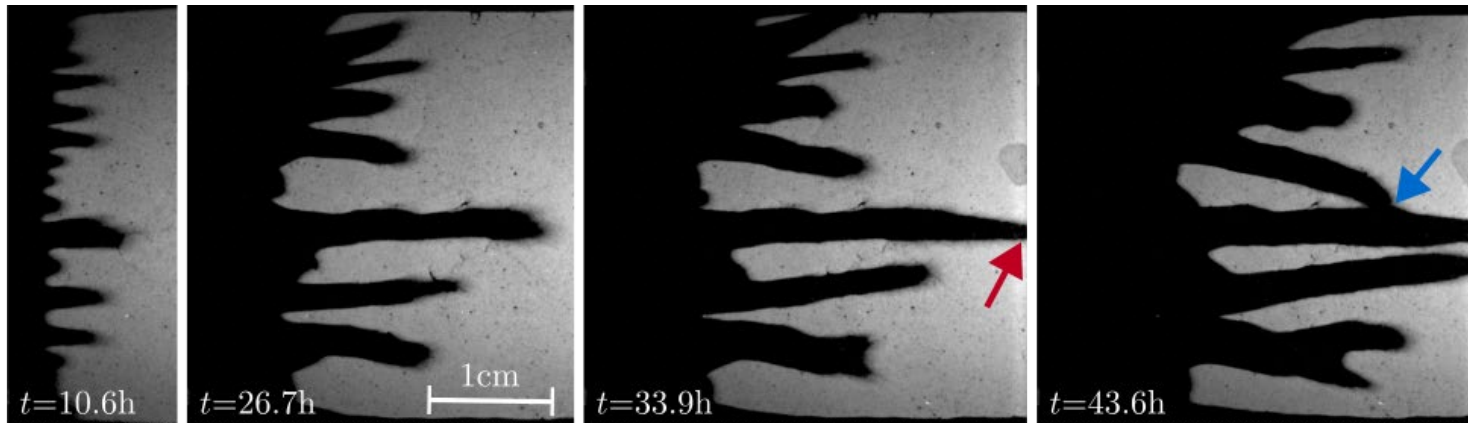
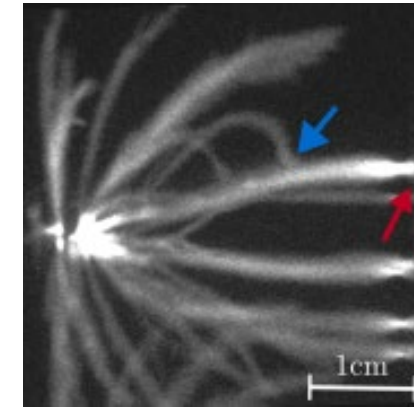


Finger revival and reconnections near breakthrough in unstable growth processes

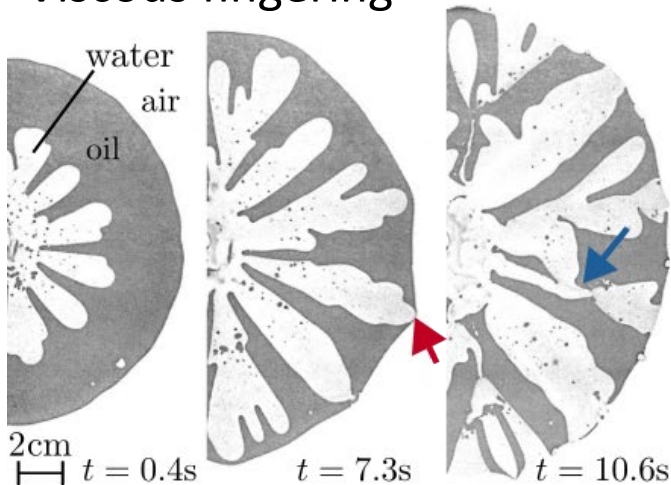
Fracture dissolution



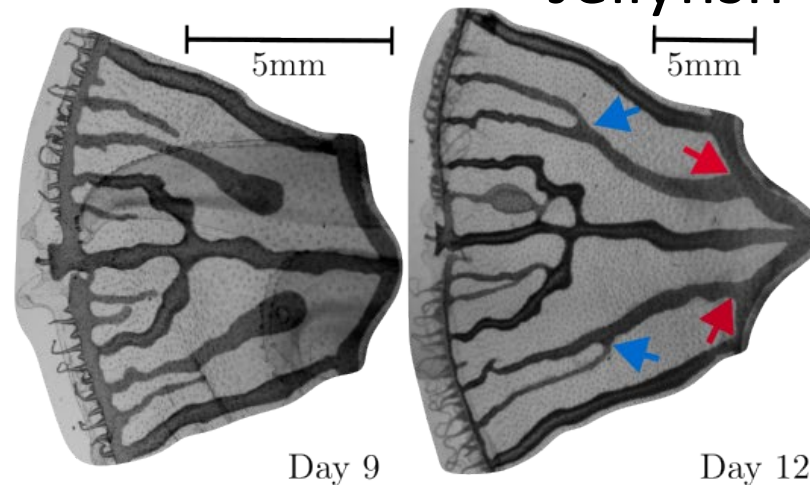
Streamer discharges



Viscous fingering



Jellyfish

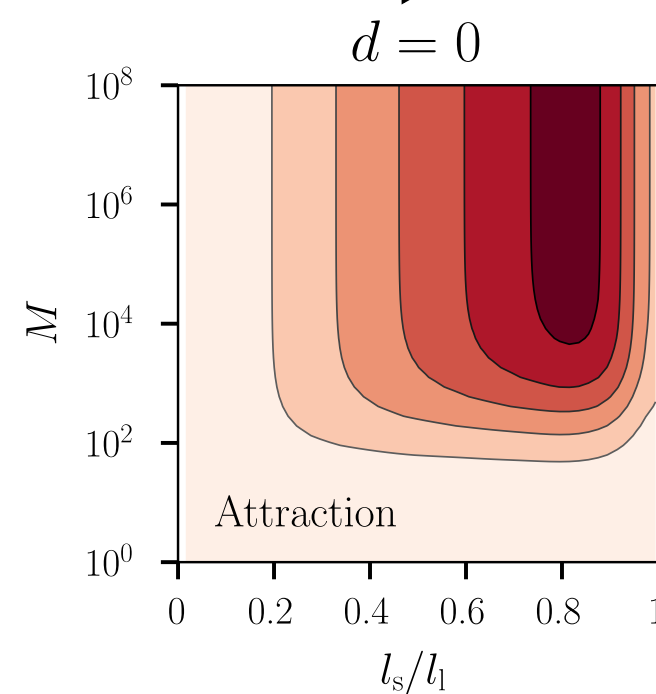
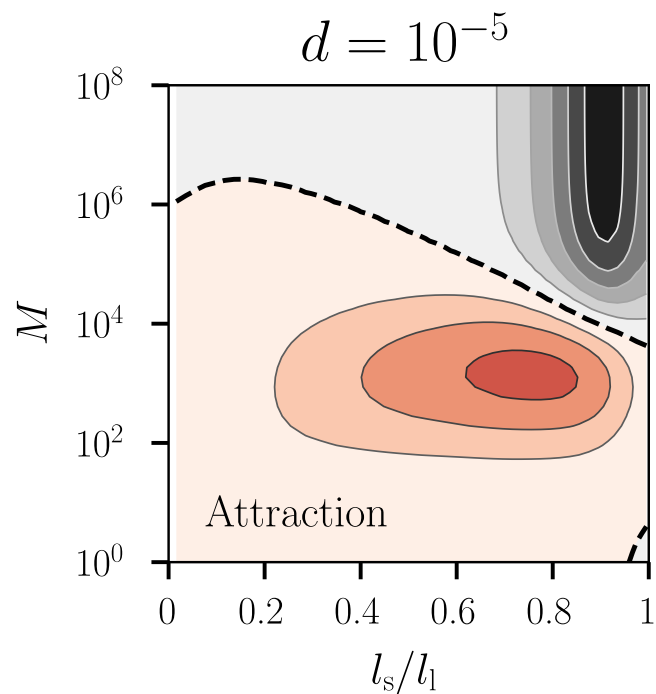
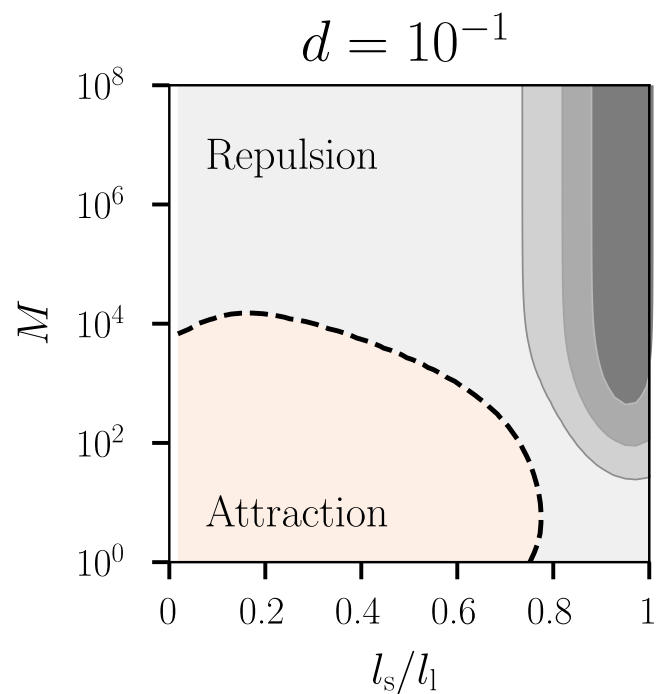
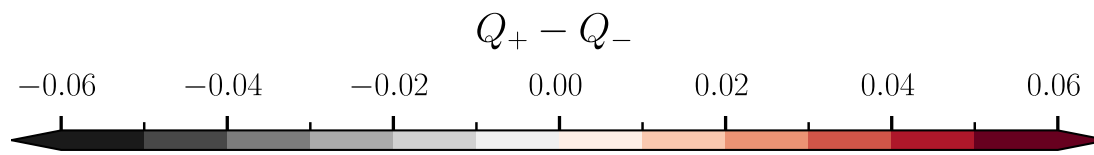
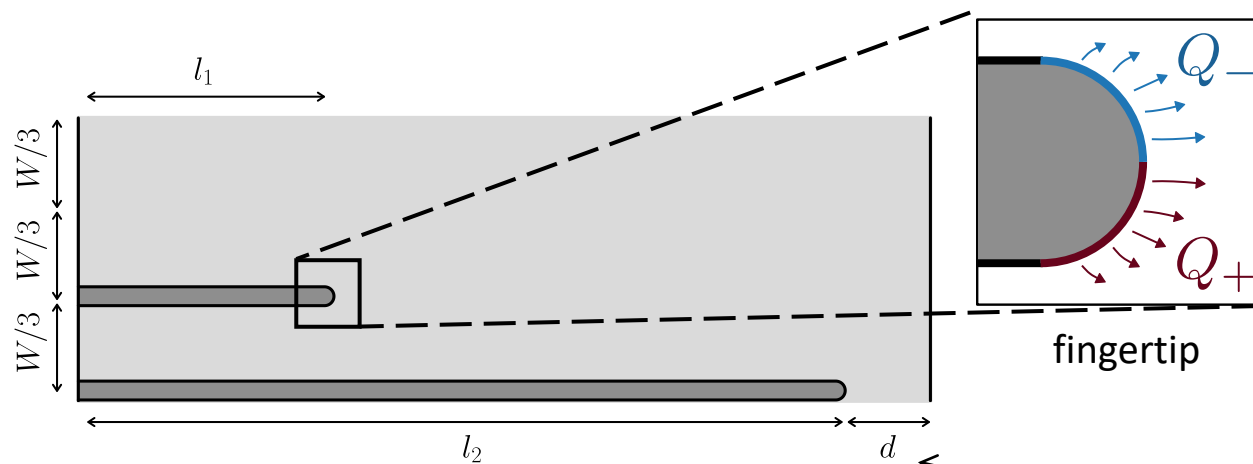


Stanisław Żukowski^{1,2},
Annemiek JM Cornelissen¹,
Stéphane Douady¹, Piotr Szymczak²

¹ Université Paris Cité, France, ² University of Warsaw, Poland



Attractive interactions increase when the finger is close to the breakthrough



gap