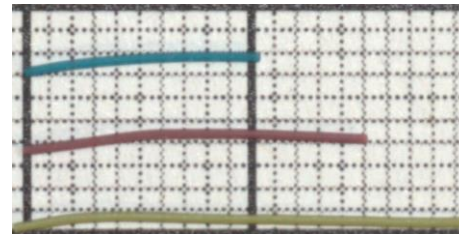


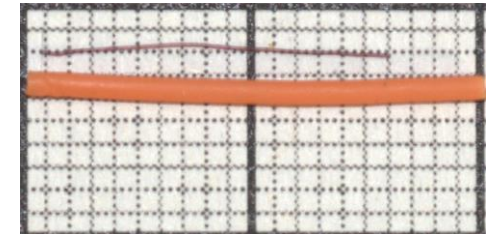
Flexible fibers' transport in a homogeneous and isotropic turbulent (HIT) flow

Rencontres du Non-Linéaire (RNL) 2023

Hugo PONCELET, Gautier VERHILLE

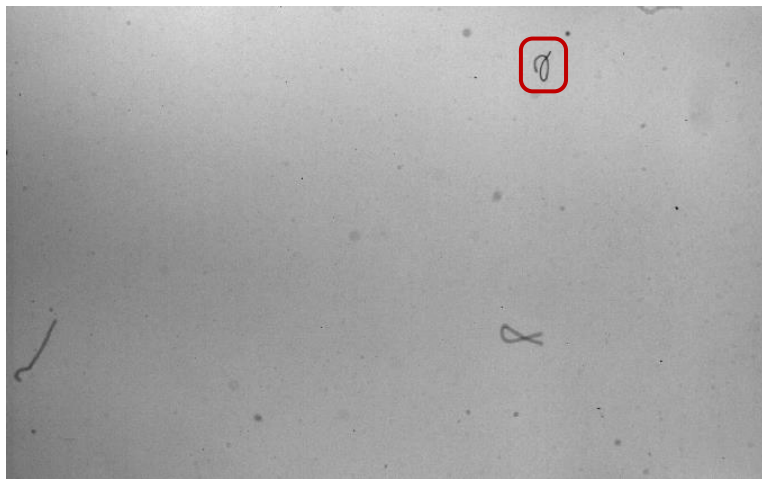
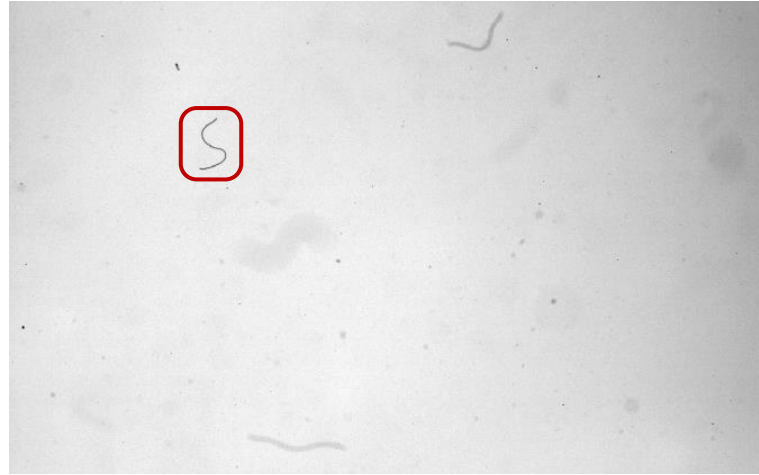
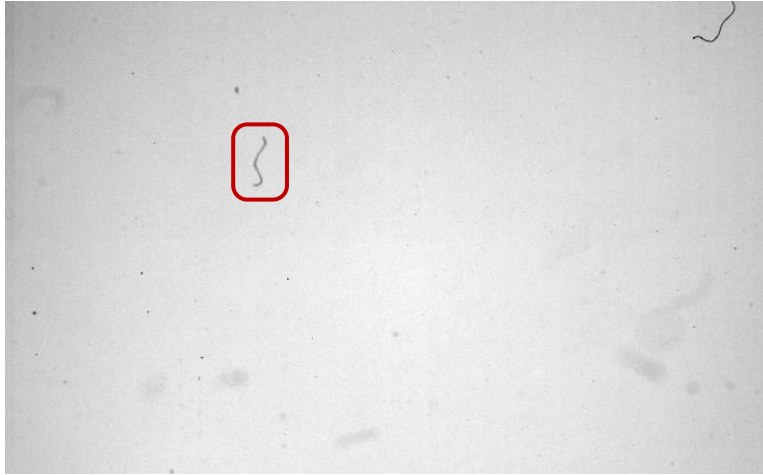


$E = 70 \text{ kPa}$



$E = 5 \text{ kPa}$

How to go from a curved fiber seen on three images to its 3D shape precisely?



Visualization of the fiber's reconstruction on five different images, $\delta t = \frac{1}{72}$ s

