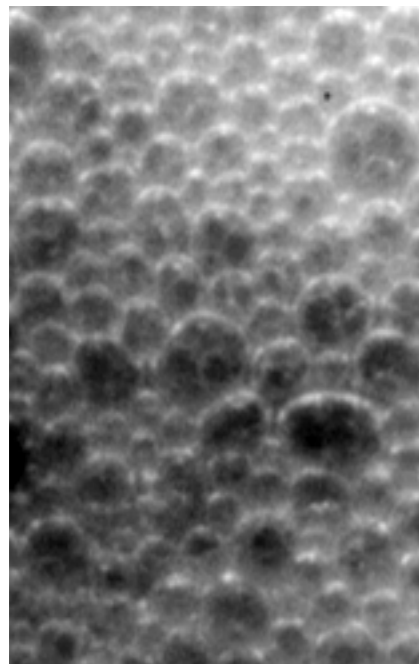
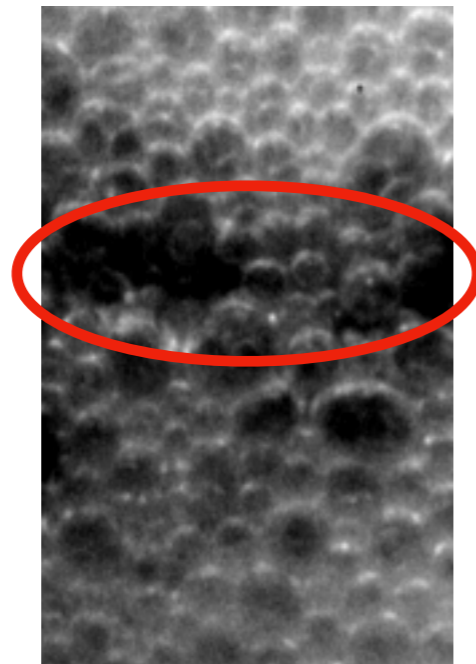


Quantifying the flows in a freezing aqueous foam

Krishan Bumma, Axel Huerre, Juliette Pierre, Thomas Séon
Institut Jean le Rond d'Alembert, Sorbonne Université, Paris
MSC, Université Paris-Cité, Paris

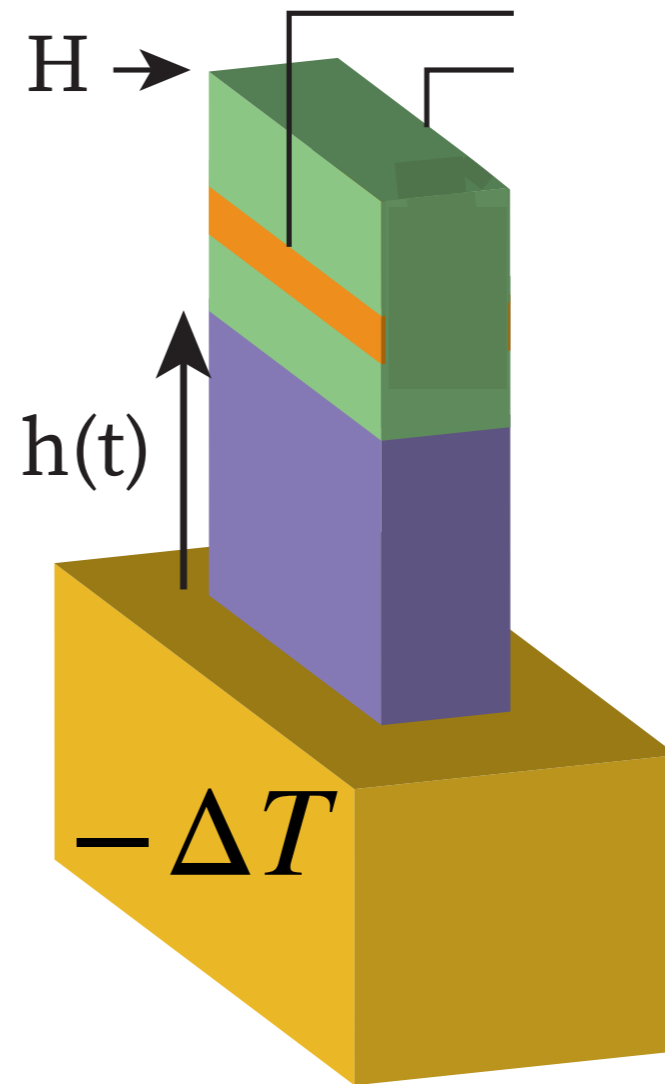


Before freezing

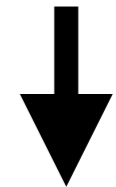


After freezing

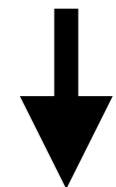
No more
bubbles



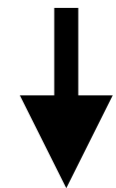
$$\sigma(\phi_l(t))$$



$$\phi_l(t)$$



$$\phi_{ice}(t)$$



$$\phi_{ice}(z)$$

ϕ_{ice} can be locally very large!